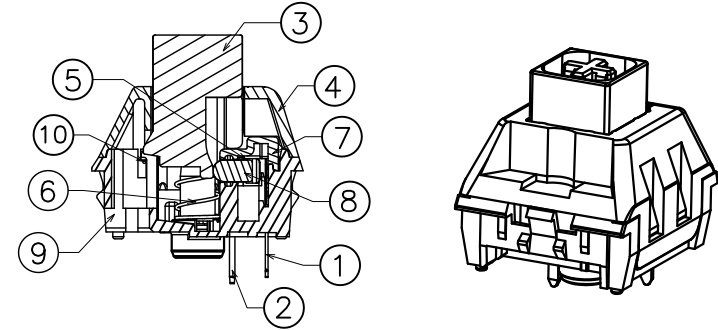
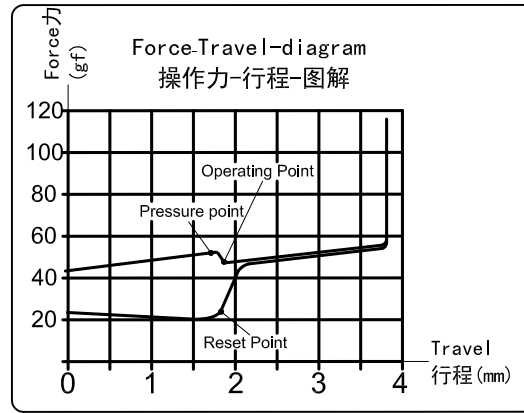
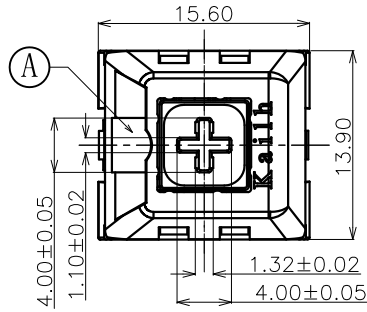


ABIDE BY ROHS

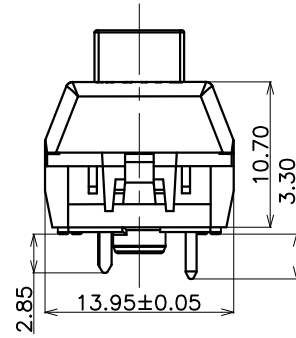
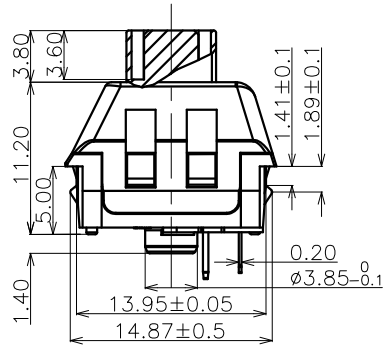
White shaft



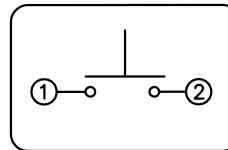
- Specification :
- 1. Rating: 12 VAC/DC max. 2 VDC min. 10mA AC/DC max. 10 μA DC min.
 - 2. Contact Resistance: 200mΩ Max
 - 3. Insulation Resistance: 100MΩ Min. (DC100V)
 - 4. Withstand Voltage: AC100V(50-60Hz) for 1 minute
 - 5. Tactile Force: 55±10gf
 - 6. Operation Force: 45±15gf
 - 7. Return Force: ≥15gf
 - 8. Conduction travel: 1.80±0.3mm
 - 9. Total travel: 3.60±0.3mm
 - 10. Electrical Life: 80,000,000 Cycles(min).
 - 11. Degree of protection: IP56(excluding the terminals)
- <Feel is allowed to have difference before and after life test>

D

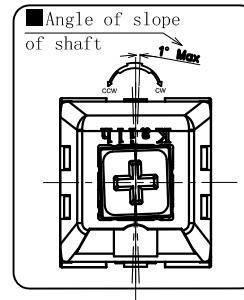
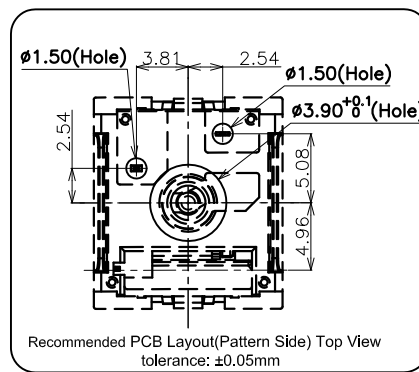
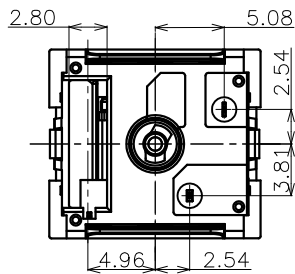
C



■ SWITCH FUNCTION



B



ITEM	PART NAME	TER'NO.	QTY.	MATERIAL	FINISHING	REMARK
⑩	Torsional Spring	---	1	Stainless Steel	Nature	---
⑨	Base	---	1	PA66	White	---
⑧	Slider	---	1	POM	Green	---
⑦	Protecting Cover	---	1	PA66	Nature	---
⑥	Spring	---	1	Stainless Steel	Nature	---
⑤	Contact	---	2	Composite gold	---	---
④	Cover	---	1	PC	Nature	---
③	Keystroke	---	1	POM	White	---
②	Static Plate	---	1	Brass	Plating Ni	---
①	Movable Plate	---	1	Copper Alloy	Nature	---

APPROVALS		DATE	DONGGUAN CITY KAIHUA ELECTRONICS CO.,LTD			
DRAWN	L.Zhang	2016.11.18	Kailh			
CHECKED			TITLE:	PG1511F Keystroke Switch(White shaft)		
APPROVALS			PART NO.	CPG1511F01S02		
TOLERANCES ARE	30<L	±0.30	ANGLE	UNIT: mm	SCALE: 1:1	PROJ:
	10<L≤30	±0.20		DRAWING NO.	KHA-PG1511F-002EN	SHEET 1 OF 1
	5<L≤10	±0.15				
	L≤5	±0.10				

A

ECN NO.	REV.	DATE.	DESCRIPTION.	CHANGE.	CHECK.	APPRO.
ECN-1801-02	D	2018.01.03	MODIFIED COVER SHAPE WITH STAMPED A POSITION	L.Zhang		
	C	2017.04.10	MODIFIED KEYSTROKE WITH STAMPED A POSITION	L.Zhang		
	A	2016.12.06	NEW	L.Zhang		

D

C

B

A

4

3

2

1